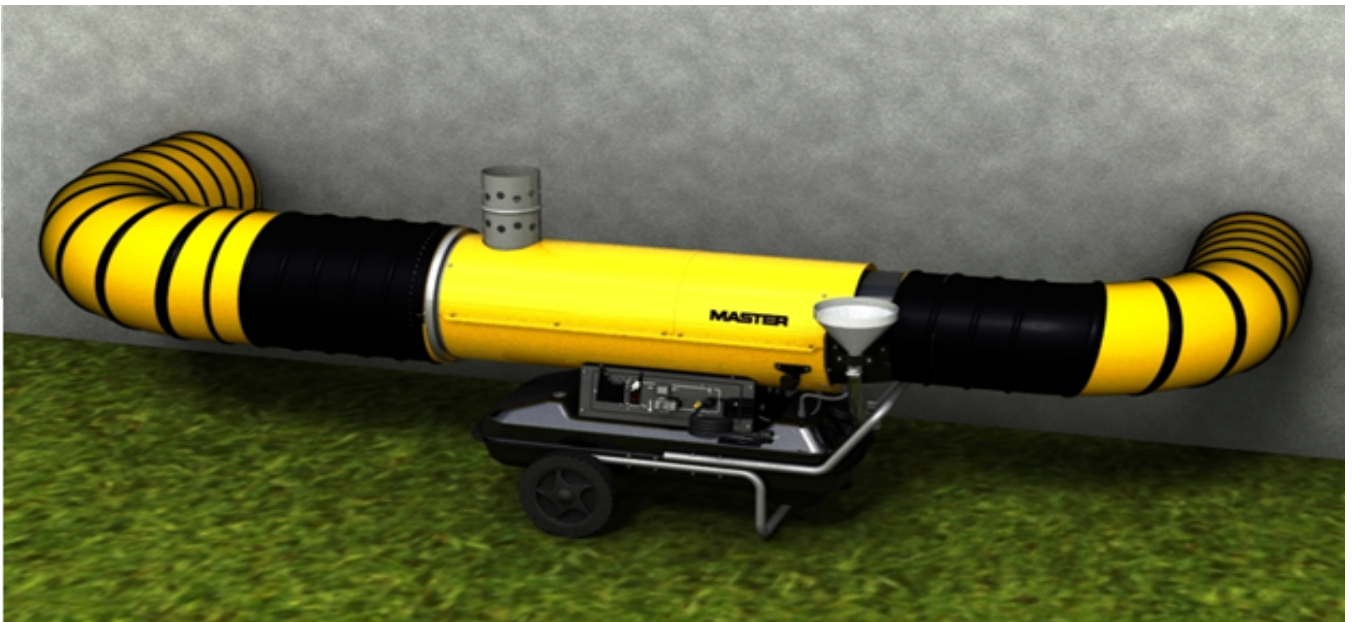
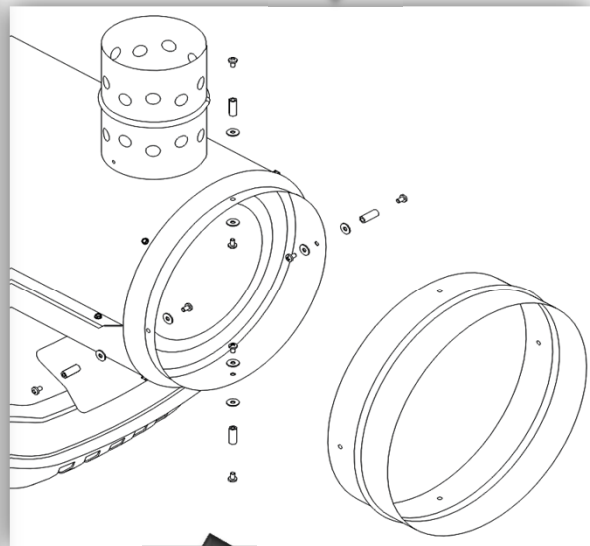
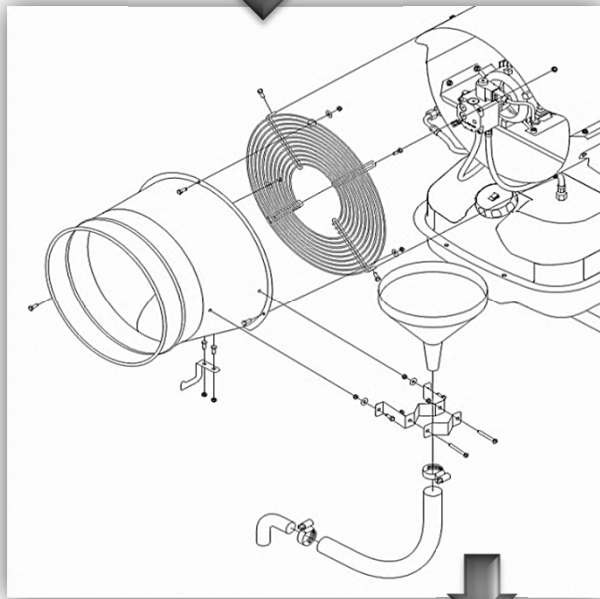
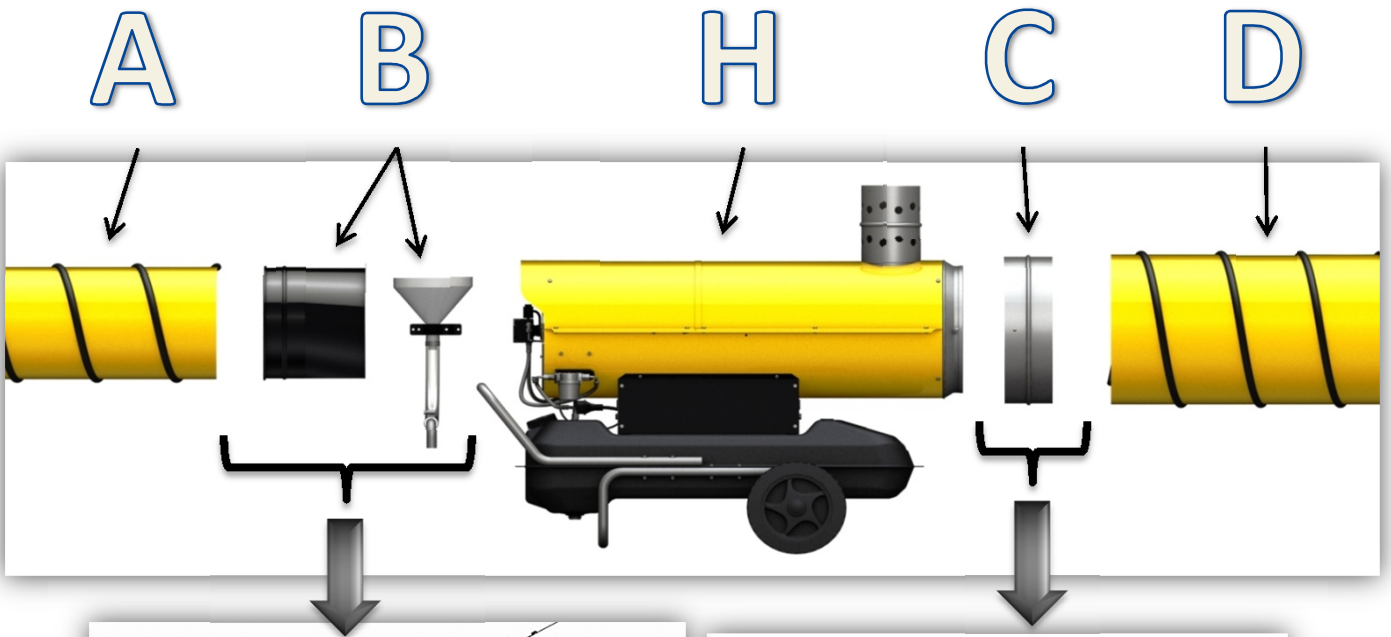


AIR RECYCLING SYSTEM FOR INDIRECT OIL HEATERS



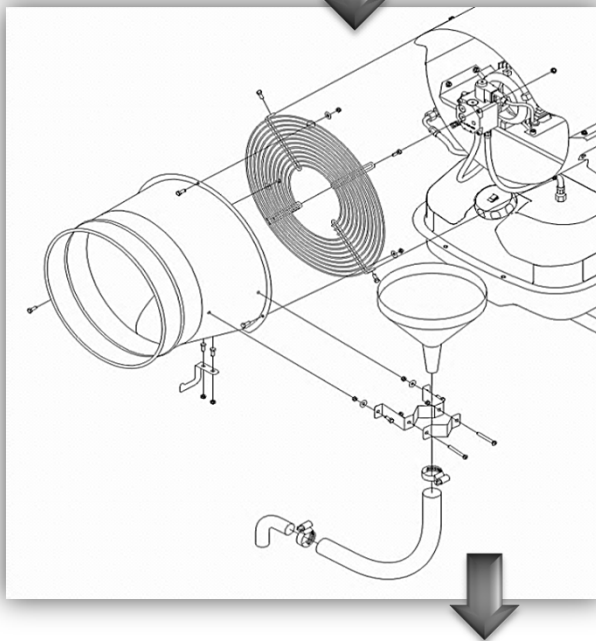
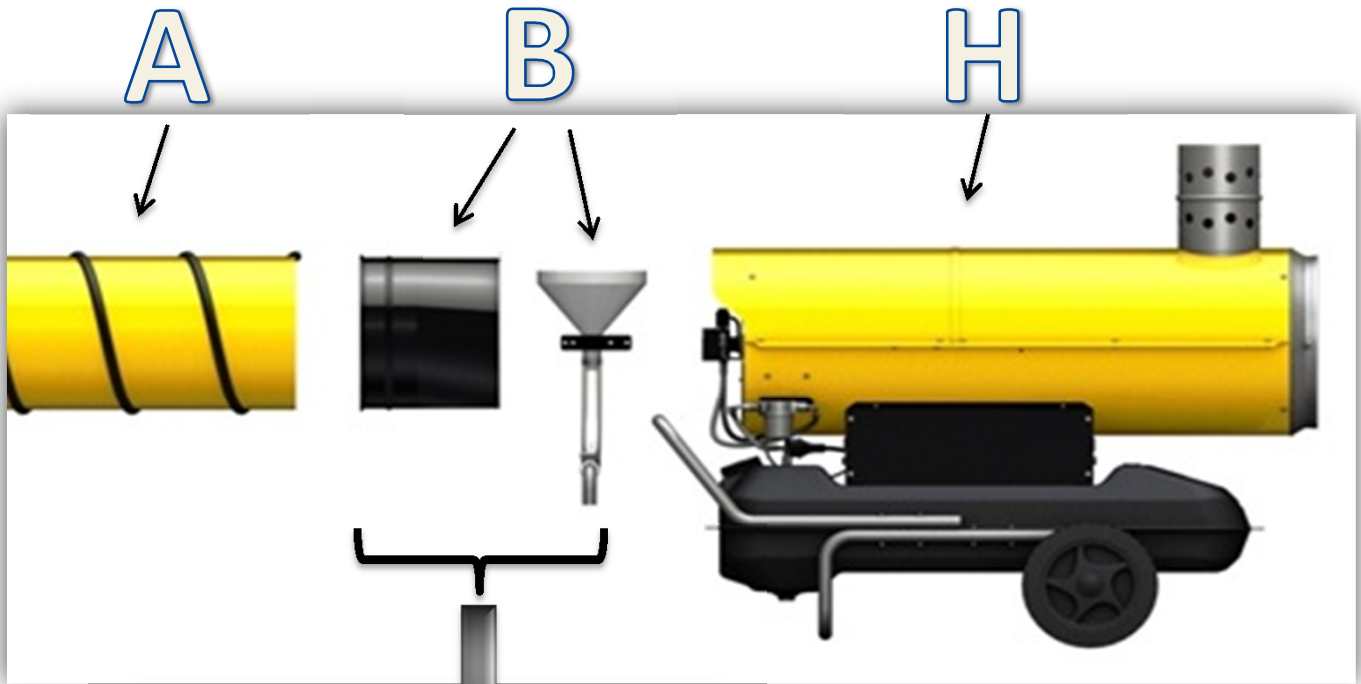
representative pictures

SOLUTION 1



A		B	H	C	D	
INLET HOSE	Ø INLET DIAMETER	AIR RECYCLING KIT		ADAPTOR RING KIT	Ø OUTLET DIAMETER	OUTLET HOSE
4031.401	407 mm	4100.825	BV 290	4031.910	610 mm	4031.038
4515.553	305 mm	4100.826	BV 110 BV 170	4031.909	407 mm	4031.401

SOLUTION 2



A		B	H
INLET HOSE	Ø INLET DIAMETER	AIR RECYCLING KIT	
4031.401	407 mm	4100.825	BV 290
4515.553	305 mm	4100.826	BV 110 BV 170

FUNCTIONING PRINCIPLE

The air recycling system for indirect oil heaters allows to recycle the hot air, allowing to reach faster the desired temperature in a room and to save fuel.

The most important part of this system is the " Air recycling kit ". This kit permits you to connect the inlet of the heater to the room using a flexible tube, allowing to recycle the air. The air recycling kit consists of a flange for the inlet, which allows to connect the inlet to a flexible tube. We can choose to put inside hot air on the room directly from the heater (solution 2) or with the help of " Adaptor ring kit " and tube (solution 1). The adaptor ring kit and the recycling kit are available for the following Master heaters: BV110, BV170 and BV290.

SUGGESTIONS

- 1) Install the Air recycling kit on the inlet of the heater.
- 2) Install the Adaptor ring kit on the outlet of the heater. (If you need).
- 3) Connect the flexible tubes to the flanges keeping the tubes very pulled and tensed.
- 4) Each tube should be max 7,6 m long.
- 5) Maximum bends for the tubes: approximately 2 bends at 45° or 1 bend at 90°.

TECHNICAL DATA

Recycling percentage (air flow)

80%

PACKAGING

for BV290

packaging dimensions

mm

450 x 530 x 360

for BV170 - BV110

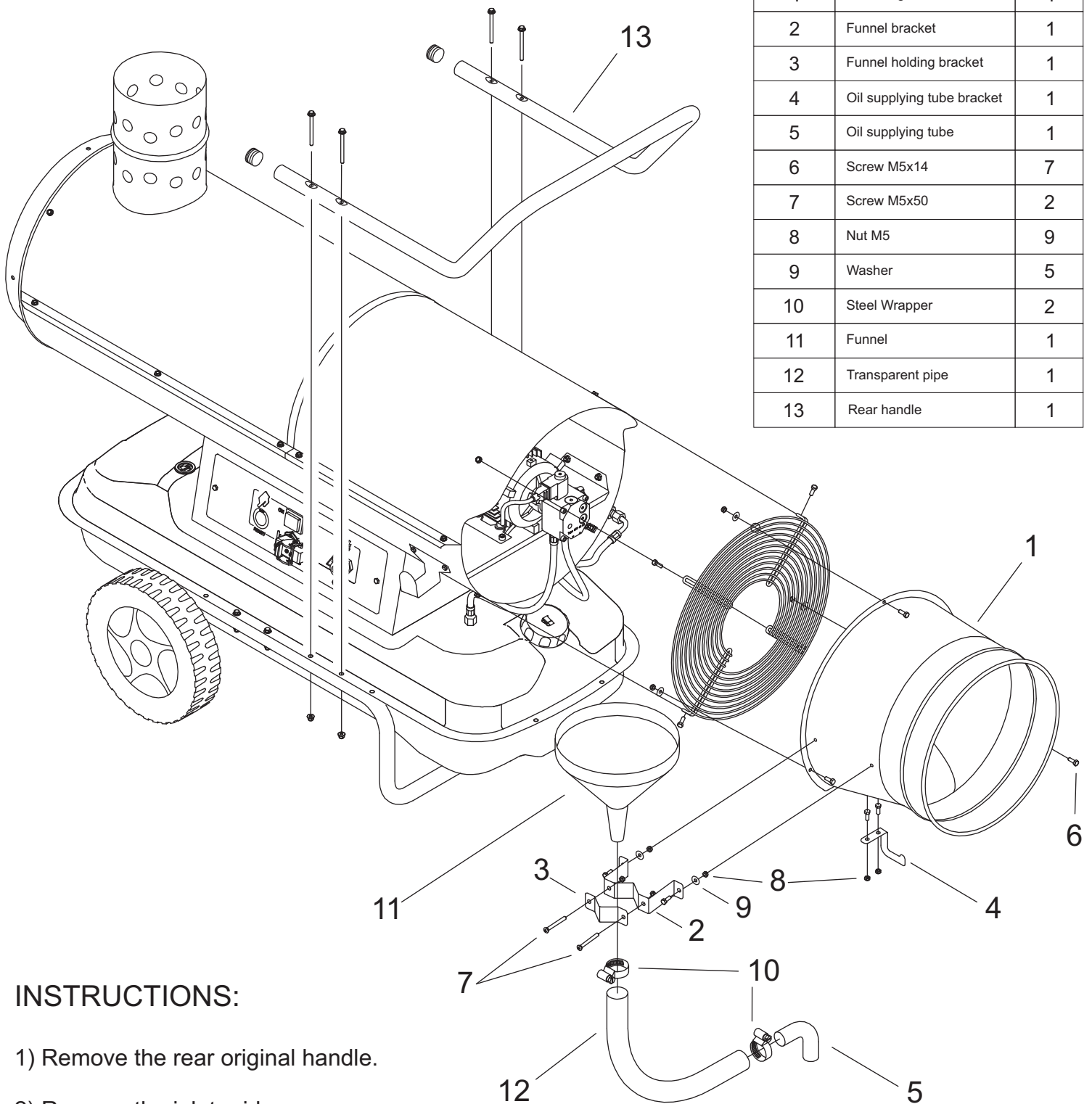
packaging dimensions

mm

350 x 380 x 290

INSTRUCTION SHEET FOR THE AIR RECYCLING KIT

N°	Description	Q.ty
1	Inlet flange	1
2	Funnel bracket	1
3	Funnel holding bracket	1
4	Oil supplying tube bracket	1
5	Oil supplying tube	1
6	Screw M5x14	7
7	Screw M5x50	2
8	Nut M5	9
9	Washer	5
10	Steel Wrapper	2
11	Funnel	1
12	Transparent pipe	1
13	Rear handle	1

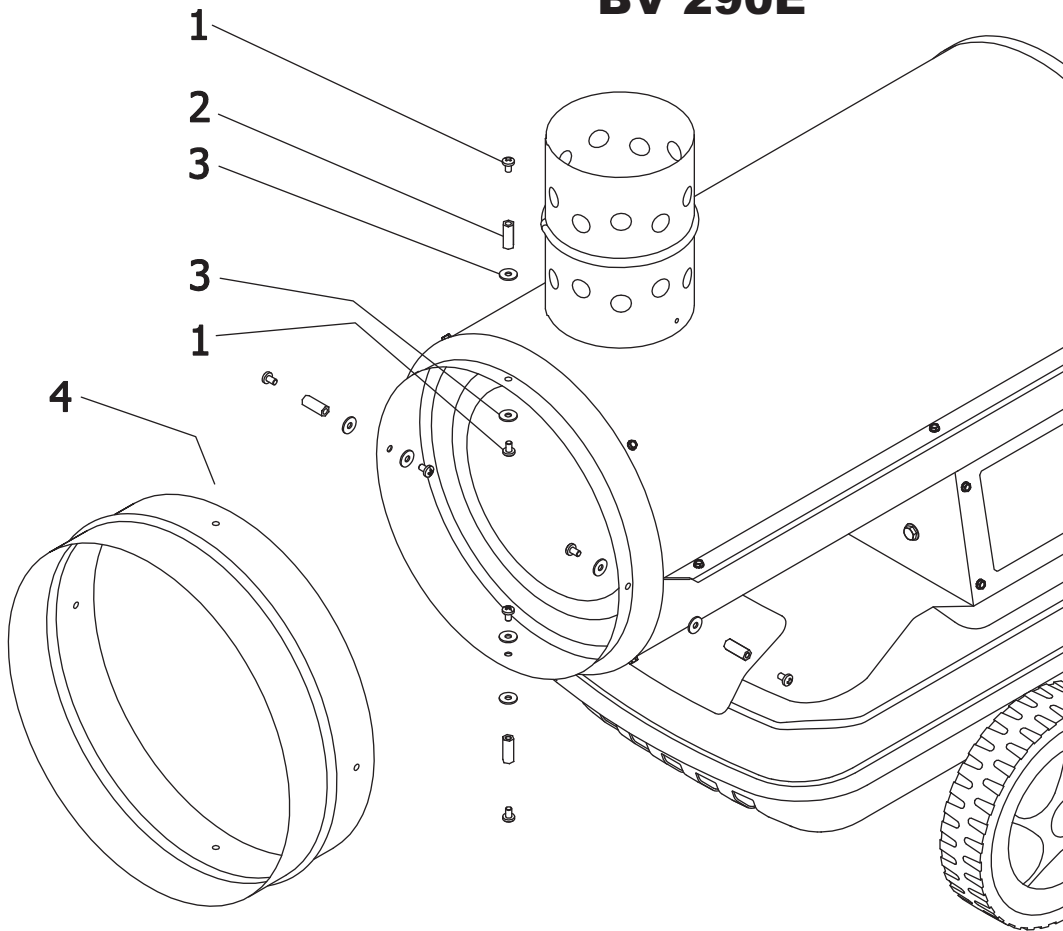



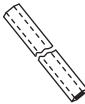


INSTRUCTIONS:

- 1) Remove the rear original handle.
- 2) Remove the inlet grid.
- 3) Assemble the inlet flange on the grid with the 3 screws, washers and nuts.
- 4) Restore the grid with the inlet flange in its original position.
- 5) Assemble the bracket for the funnel.
- 6) Assemble the pipe for supplying:
1 side with the funnel and wrapper, 1 side with 90° steel-tube and the wrapper
- 7) Assemble the lower bracket for supporting the pipe

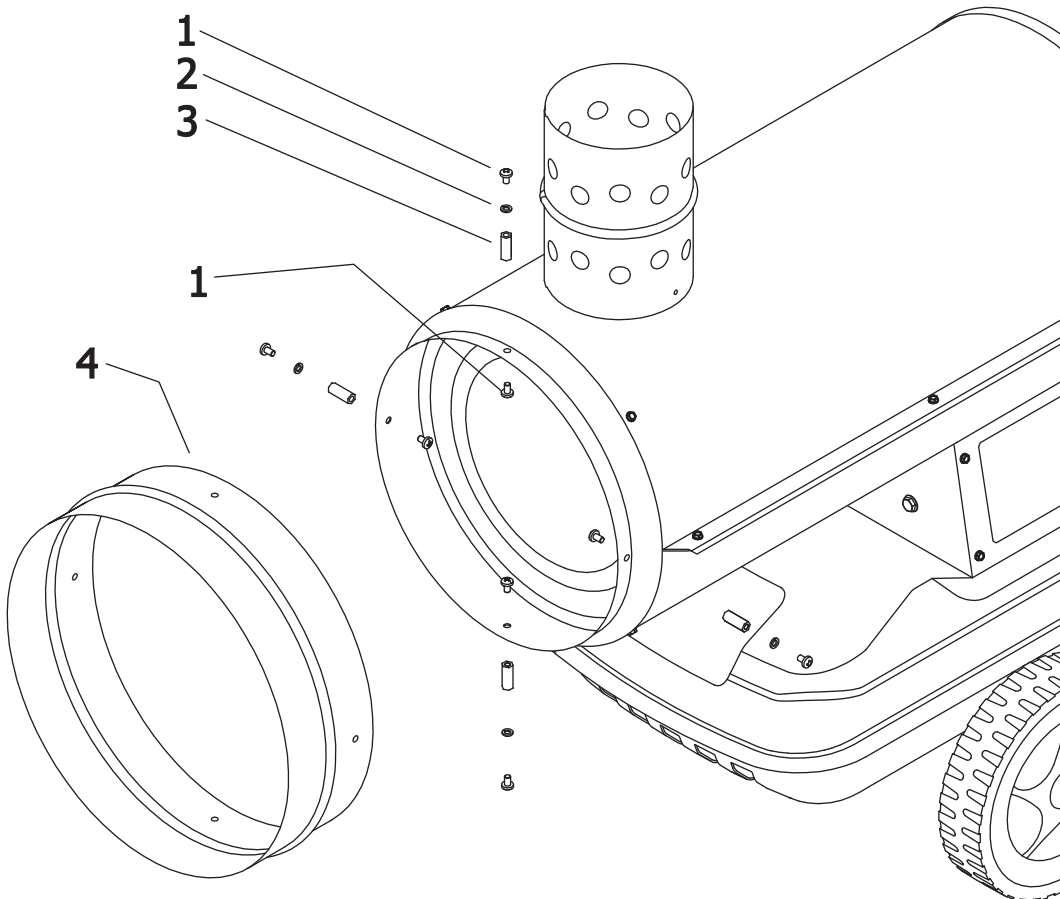
ADAPTOR RING KIT



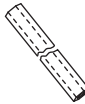

BV 290E



1		X 8
2		X 4
3		X 8
4		X 1

BV 77E - BV 110E - BV 170E



1		X 8
2		X 4
3		X 4
4		X 1