



NOVELTIES 2022

PORTABLE CLIMATE SOLUTIONS

HEATING, COOLING, DRYING, VENTILATION AND AIR CLEANING

About the Dantherm Group

Originally founded in 1954, the Dantherm Group is a European leader in portable and installed climate control solutions for a wide range of industries and uses. Based on the work of more than 500 passionate climate control experts and more than three million installations, our competence centres around Europe design and build exceptional heating, cooling, dehumidification and ventilation units that form the backbone of these climate solutions. In everything they do, they remain focused on creating healthy and comfortable climate surroundings in a sustainable, energy-efficient and cost-effective way.



Five competence centres in Denmark, Germany, Italy, Spain and UK.



Competence centre
for heating solutions: Pastrengo, Italy.



Master Climate Solutions

Part of the Dantherm Group since 2017, Master is a world-leading designer and manufacturer of portable and efficient climate control units for heating, air purification, cooling, dehumidification and ventilation. Since the inception in the 1950s in the USA, Master has delivered more than six million units for commercial and private use. Today, Master operates out of Pastrengo near Verona in Italy and it is the Dantherm Group competence centre for heating solutions.

GO DIGITAL MASTER APP



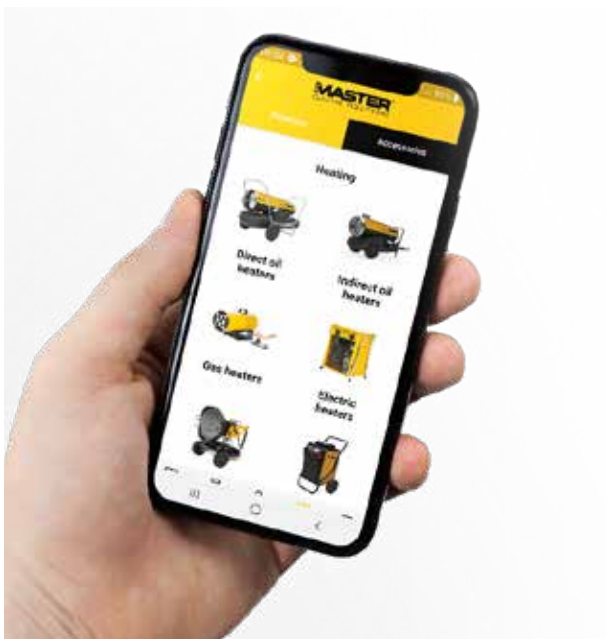
MASTER CLIMATE SOLUTIONS APP

Everything you need in the palm of your hand! Seven languages and complimentary download.

Features

Calculate your way to the best heating, drying, cooling or ventilation equipment for your next project using our range of selection tools as specified below:

- **Portable heaters**
The heater selection tool menu contains guides and calculators for industry air flow heaters, infrared heaters as well as disinfection and pest control heaters. Simply enter your application details and the app will identify one or more suitable solutions for you.
- **Portable coolers**
The cooler selection tool menu offers access to a simple size guide calculator for our extensive range of cooling solutions. By entering room length, width and specifying application type the app will be able to find the best unit for you.
- **Portable dehumidifiers**
Specify average room temperature and relative humidity, room length, width and height. The app will then determine the required dehumidifier capacity and based on that point you to one or more ideal solutions.
- **Fans and ventilation**
The fan/ventilation selection tool simply requires you to specify what you need done in your application: blow the air, circulate the air, dry the floor or purify the air. Based off of that information, the app presents the range of solutions suitable for your intended use.
- **Catalogue**
The app also makes it possible to browse through the user-friendly product catalogue that showcases all available heaters, coolers, dehumidifiers, ventilation units along with all available accessories.
- **3-year limited warranty**
The app also enables you to activate the unique 3-year limited warranty on Master products. Once registered, the app stores your full list of Master products in your individual account.










Keep updated and follow us on:

 Master Climate Solutions YouTube channel:
www.youtube.com/c/masterheaters

 LinkedIn profile:
Dantherm Group

DanthermGroup website:
www.danthermgroup.com

INDEX

Product	Name	Description	Power Range	Applications	Page
	HIGH TEMPERATURE ELECTRIC HEATERS	High temperature electric heaters for: process heating, thermal disinfection and pest control.	18kW	<ul style="list-style-type: none"> Industry 	6-7
	STATIONARY HEATERS	Master heaters designed for indoor applications. They are suitable for areas with high air flow requirements like greenhouses or animal housing, warehouses, workshops, etc. Electric hot water heater is recommended for emergency in case of heating system failure, frost protection and more.	29-75kW	<ul style="list-style-type: none"> Agriculture Industry Warehouse 	8-9
	PROFESSIONAL CONDENSATION DEHUMIDIFIERS – ROTOMOULDED	Mobile machines that are used in all types of rooms. The use of this type of condensation dehumidifiers will speed up finishing and redecoration works.	16-45.9L/24H	<ul style="list-style-type: none"> Agriculture Public spaces House Restoration works Rental 	10
	HUMIDITY METERS	Moisture meters for quick, non-destructive moisture measurement.		<ul style="list-style-type: none"> Construction Restoration works 	11
	AIR CLEANERS	An air cleaner is a portable filtration system that removes particles and gases from the air. It improves the air quality and filters bacteria, viruses, pollen, dust and odours.	up to 800 m³/h	<ul style="list-style-type: none"> Public spaces House Hotels 	12-13
	EXPLOSION PROOF BLOWERS	Air blowers support building and water damage drying. They are equipped with a very powerful and energy saving fan.	up to 2,093 m³/h	<ul style="list-style-type: none"> Restoration works Construction 	14
	DUST STOP EQUIPMENT	Dust stop doors and walls allow to quickly divide the dirty area from the clean area. They are easy to set up in just a few minutes.		<ul style="list-style-type: none"> Agriculture Industry Warehouse Restoration works Construction 	15-17
	SIMPLIFY CLIMATE SOLUTIONS®	An innovative system for the remote control of the climate using GSM. It monitors the function of dehumidifiers installed in a room.			18-19

HIGH TEMPERATURE ELECTRIC HEATERS FOR: PROCESS HEATING,
THERMAL DISINFECTION AND PEST CONTROL



EKO 18

new product



EKO 18



Possible connection to the flex tube



You can adjust the temperature up to 120°C by changing the air flow



- Max. temperature 110 -120°C
- Temperature increase – variable
- Output temperature adjustable by changing the air flow
- Max. air input 60°C
- Compact and lightweight (20.5kg)
- EKO 18 delivers 1410m³/h of hot air using only 18kW 400V (three phase)
- Adjustable fan speed
- Safety thermostat: automatic shutdown in case of more than 140°C in hose
- Spiral heating element for quick and even heat
- Built-in hour counter
- Stackable



Application example: Tempering process in industry – glass-fibre composite materials are made with epoxide resin and have to be heated to temperatures of approx. 75°C for hardening. The Master EKO 18 is especially suitable for uniform and high temperatures.

Optional accessories



Analogue thermostat TH5 with cable
3m - **4150.109**
10m - **4150.112**



Digital thermostat THD with cable
5m - **4150.133**
10m - **4150.134**



NYLON flex tube with bag, 7.6m
Ø31cm - **4515.360**

Specifications	Units	EKO 18
Heating power	kW	18
	Btu/h	61,400
	kcal/h	15,480
Air flow	m ³ /h	1410
Power supply	V/Hz	400/3ph/50-60
Rated current	A	32
Remote thermostat		Analogue or digital
Product size (l x w x h)	mm	730 x 414 x 482
Box size (l x w x h)	mm	780 x 440 x 570
Net/gross weight	kg	20.5
Pallet	pcs	9

HIGH TEMPERATURES ELECTRIC HEATERS WITH DIGITAL CONTROL FOR PROCESS HEATING

HT 18



new product



HT 18



- Electric heater 18kW for high process temperatures in recirculated-air mode
- Recirculation temperature up to 100° C
- Powerful radial fan
- High-performance heating element for trouble-free operation
- Electronic temperature control
- Forklift lugs and crane hooks for easy logistics
- Possibility to connect high temperature resistant flex tubes
- For use in the annealing of plastics, in pest control, as process heat for industrial requirements and for the drying of heat-resistant materials

Optional accessories



NYLON flex tube with bag, 7.6m
Ø31cm - 4515.360



Electronic temperature control



Comfortable handle for easy transport

Specifications	Units	HT 18
Heating power	kW	18
	Btu/h	61,400
	kcal/h	15,480
Max. air flow	m ³ /h	2,050
Power supply	V/Hz	400/3ph/50
Rated current	A	28
Temperature increase	Δt (K)	36
Product size (l x w x h)	mm	1446 x 600 x 1055
Box size (l x w x h)	mm	1446 x 600 x 1055
Net/gross weight	kg	210
Pallet	pcs	1

FIXED INDIRECT OIL FIRED AIR HEATERS

F 40-F 75



F 40
F 75



- Large built-in oil tank
- Integrated burner with electronic flame control and photocell cut-off
- Fan limit thermostat with automatic reset
- Summer/winter switch for ventilation only
- Centrifugal fan
- Stainless steel combustion chamber
- High efficiency dual-circuit heat exchanger
- Wide inspection doors for easy cleaning
- Built-in thermostat

Specifications	Units	F 40	F 75
Heating power	kW	34.8	70.8
	Btu/h	119,000	241,500
	kcal/h	29,900	61,000
Air flow	m ³ /h	2,700	6,000
	Fuel	Oil	Oil
Fuel consumption	kg/h	2.75	5.6
Electric power	W	680	1,350
Power supply	V/Hz	230/1ph/50	230/1ph/50
Flue tube	Ømm	153	153
Air pressure	Pa	150	150
Product size (l x w x h)	mm	1010 x 530 x 1745	1045 x 600 x 1920
Net weight	kg	141	184

PORTABLE HOT WATER HEATER WB 20



**new
product**



WB 20



- Portable electric hot water heater heating up to 18kW with individually adjustable heating programs
- Compact and quick to install
- Ready for operation thanks to a direct connection to the building's pipeline network
- Service-friendly thanks to direct access to the heating elements
- Heating element with three high-quality steel electric rods
- Data logger function
- Expansion tank
- Digital control
- Accepting different electric plugs
- Large wheels for easy transport
- Automatic venting
- Recommended for: emergency in case of heating system failure, frost protection, functional heating in case of testing new boiler systems, screed drying



3 different sockets on board:
 - 230V/1ph/16A/3 kW
 - 400V/3ph/16A/9 kW
 - 400V/3ph/32A/18 kW
 The heater detects the connection automatically and regulates the power.



Digital control panel

Optional accessories



Power cords, 10m
 230V-16A - **1200092**
 400V-16A - **4511.032**
 400V-32A - **4511.034**



Pipes, 3m (set of 2: flow and return) - 1200090



Tube for filling, 5m - 1200091

Specifications	Units	WB 20
Heating power	kW	3/9/18
	Btu/h	10,200/30,700/61,400
	kcal/h	2,600/7,700/15,500
Heating temperatures	°C	+20 - +80
Electric power	kW	18
Power supply	V/Hz	220-240/1ph/50, 400/3ph/50
Rated current	A	26.5
Product size (l x w x h)	mm	610 x 590 x 1010
Box size (l x w x h)	mm	680 x 660 x 1160
Net/gross weight	kg	70/84
Pallet	pcs	1

PROFESSIONAL CONDENSATION DEHUMIDIFIERS, ROTOMOULDED DHP 20



**new
product**



DHP 20



- Water pump on board
- On-board humidistat
- Stackable
- Practical cable winder
- Easy to move - wheels and extendable handle
- Mechanical hygrostat
- Heavy-duty, rotomoulded casing
- High efficiency
- Hour counter
- Optional air duct connection for dry air

Optional accessories



**Air duct, 5m,
Ø10cm - 1250108**



**Air duct connection
adaptor - 1306539**



**Compact and
lightweight**



**Extendable, easy to use
handle**



**Control
panel**

Specifications	Units	DHP 20
Capacity (30°C/80% RH)	l/24h	16
Air flow	m ³ /h	375
Operating temperature range	°C	5-32
Operating humidity range	%	30-90
Power consumption	W	395
Power supply	V/Hz	220-240/1ph/50
Refrigerant		R1234yf
Sound level	dB(A)	60
Compressor		Rotary
Product size (l x w x h)	mm	360 x 330 x 490
Box size (l x w x h)	mm	410 x 420 x 570
Net/gross weight	kg	21
Pallet	pcs	18
Dual voltage		No

HUMIDITY METERS

HFM 200



new product



HFM 200



- For fast, non-destructive, humidity measurement of tiles, organic building materials such as wood and inorganic building materials (lime, cement, stone)
- The capacitive high-frequency technology permits humidity measurement in a measuring depth of 20 to 40mm
- LCD triple display with background lighting
- Automatic calibration (in dry air) when the measuring unit is switched on
- Low-battery indicator and automatic shutdown
- Robust plastic casing suitable for construction sites

DRYING



Recommended for water damage restoration, building construction, building drying and more.



Specifications	Units	HFM 200
Measurement type		Building construction humidity
Measuring range - material humidity:		0-100
Capacitive measurement (HF sensor)		20-40
Measuring depth (HF sensor)	mm	LCD
Display	-	235 x 60 x 28
Product size	mm	0.218
Weight	kg	

AIR CLEANERS

HL 400 PLUS



new product



HL 400



- Compact, attractive design
- Filters bacteria, viruses, pollen, dust and odours
- Supplied with filters for different applications: HEPA H14 against bacteria and viruses, EPA E10 against dust, activated carbon filter against unpleasant smell
- UV-A light against bacteria
- Removable cover for easy filter change
- Very quiet - in night mode only 32 dB(A)
- Can be controlled via WiFi via the app
- Ideally suited for flats, homes and offices, shops, medical practices, seminar and training rooms

Optional accessories



Combifilter
HEPA H14 + G4
HL 400 - 1771005



Digital control panel

Specifications	Units	HL 400 PLUS
Air flow with standard filter EPA E10 - max./mid./low	m ³ /h	360/285/170
Air flow with HEPA H14 - max./mid./low	m ³ /h	164/97/76
Room size with EPA 10 - with 5/3 air exchanges (height 2.4m)	m ²	30/50
Room size with HEPA H14 - with 5/3 air exchanges (height 2.4m)	m ²	14/23
CADR (Clean Air Delivery Rate)/CADR by Formaldehyd purified air	m ³ /h	360/80
Power supply	V/Hz	230/1ph/50-60
Power consumption	W	90
Power consumption - standby mode	W	8.7
Sound level @3m / at min. speed	dB(A)	44/32
Protection		IPX0
Product size (l x w x h)	mm	200 x 400 x 600
Box size (l x w x h)	mm	320 x 460 x 770
Net/gross weight	kg	9,7 / 11
Pallet	pcs.	16

AIR CLEANERS HL 800 PLUS



**new
product**



HL 800



- Compact, attractive design
- Filters bacteria, viruses, pollen, dust and odours
- Supplied with filters for different applications: HEPA H14 against bacteria and viruses, E11 against dust, activated carbon filter against unpleasant smell
- Very quiet - only 20 db(A) in night mode
- 3-speed fan
- Ideally suited for flats, offices, conference and seminar rooms, schools, public authorities, medical practices and gyms
- Can be controlled via WiFi via the app

Optional accessories



**Combifilter HEPA H14
(set 2 pcs)**
HL 800 - 1772006



Digital control panel

VENTILATION

Specifications	Units	HL 800 PLUS
Air flow with EPA E11 - max./mid./low	m ³ /h	800/682/480
Air flow with HEPA H14 - max./mid./low	m ³ /h	403/308/169
Room size with EPA 11 - with 5/3 air exchanges (height 2.4m)	m ²	66/111
Room size with HEPA H14 - with 5/3 air exchanges (height 2.4m)	m ²	30/50
CADR (Clean Air Delivery Rate)/CADR by Formaldehyd purified air	m ³ /h	800/300
Power supply	V/Hz	230/1ph/50-60
Power consumption	kW	90
Sound level @3m - Silent/speed 1/speed 2/speed 3	dB(A)	20/33/40/42
Protection		IPX0
Product size (l x w x h)	mm	400 x 400 x 665
Box size (l x w x h)	mm	530 x 530 x 800
Net/gross weight	kg	14 / 16
Pallet	pcs.	6

EXPLOSION PROOF BLOWERS

POWERVENT 4200EX - COMPACT 1500EX



**new
product**



**POWERVENT
4200EX**

**new
product**



**COMPACT
1500EX**



- Explosion-proof ventilator
- For harsh working conditions
- Robust housing made of high-quality carbon plastic
- High air flow
- Very energy-efficient operation
- Easy transport with comfortable handle
- Possibility to connect a flex tube
- Effective protection against dust and water
- Extraction of dangerous gases
- ATEX certification: II 2G EEx de IIB T6

Optional accessories



Flex tube, antistatic, 7.6m
PowerVent 4200EX -
Ø305mm - 1250066
ComPact 1500EX -
Ø230mm - 1250099



Power cable
adaptor, 1.5m
PowerVent
4200EX, ComPact
1500EX - 1450290



Duct canister
antistatic incl. duct
7,6 m, Ø205mm -
ComPact 1500EX
- 1250211

Specifications	Units	POWERVENT 4200EX	COMPACT 1500EX
Air flow	m ³ /h	2,093	1,195
Max. air pressure	Pa	314	195
Fan type		1 x Axial	1 x Axial
Fan speed		1	1
Power consumption	W	560	250
Power supply	V/Hz	220-240/1ph/50-60	230/1ph/50
Sound level	dB(A)	89	74
Flex tube diameter	cm	30.5	20.5
Protection		IP65	IP55
Product size (l x w x h)	mm	406 x 381 x 406	330 x 305 x 355
Box size (l x w x h)	mm	450 x 500 x 520	450 x 400 x 530
Net/gross weight	kg	25	8.2 / 15
Pallet	pcs	6	8

DUST STOP DOOR DCD 3.0



DCD 3.0



- Dust control door consisting of: door element (for door width of 680 - 1430 with adapters), PVC film with Velcro tape (2 x 68cm) and transport bag
- Quick and easy assembly
- An air cleaner or ventilator can be connected using a flex tube
- Two integrated dust extraction openings
- Easy to transport with a carrying bag
- Easy cleaning

Optional accessories



Flex tube - choose the one compatible with air cleaner or air scrubber you use

Dust stop doors allow to quickly divide the dirty area from the clean area.





**new
product**

HEYWALL® BASIC



**new
product**

HEYWALL® PLUS



- Quick and flexible protection against dust
- For separating walls, ceilings and partial areas
- Module system - individual modules for different applications
- Quick to set up in a few minutes
- Convenient entrance or exit by a self-adhesive zipper

HEYWALL BASIC

- Max. length 8m, max. area 28.8m²
- 4 system bars up to 3.6m high including head and foot plates
- 4 angle adapters
- 2 zippers
- 1 transport bag

HEYWALL PLUS

- 4 extendable system bars 3.6m, including head and foot plates
- 4 angle adapter
- 2 zippers
- 4 side clamps
- 4 sealing rails including ceiling clamps
- 1 transport bag

HEYWALL® elements



Extendable system bars
3.6m - 1920201



Angle adapter - 1920207



Head and foot plates -
1920204



Zippers - 1920206



Transport bag - 1920208



Side clamps - 1920205



Ceiling clamps - 1920203



Sealing rails - 1920202

MODULES FOR HEYWALL®

- A Extendable system bars made of aluminium including head and foot plates**
Fix the head and foot plate to the system bar. Clamp the foil into the top plate. Then tighten the extendable system bars 3.6m to the desired length between floor and ceiling by pulling it out.
- B Sealing rails incl. ceiling clamps**
For application on ceilings, use the sealing rail and ceiling clamps. Use sealing rail with side clamp for wall closure.
- C Side clamps**
These create a wall closure together with the sealing rails. First, connect the side clamp to the sealing rail. Then connect the sealing rail and the side clamp at the appropriate height to the system bar.
- D Angle adapter**
For fixing the system bars to inclined walls. Screw the angle adapter onto the system bar, and then screw the head plate onto the angle adapter. Then clamp the system bar between the floor and the slant.
- E Self-adhesive zippers**
For application on the plastic foil. For easy entry and exit of the construction site. Stick the zipper and cut the film for the passage.
- F Carrying bag**
Bag with sturdy zipper for stable transport and handling, as well as integrated bag for accessories. Washable surface inside and outside.



Scan the code
Watch the installation video



REMOTE CLIMATE CONTROL SIMPLIFY CLIMATE SOLUTIONS®



Simplify is a cloud-based climate management solution designed to remotely control and monitor the climate in various construction and restoration projects.

Effectively acting as a real business management tool, the solution will deliver the fully transparent data feedback you need to optimise your climate control processes. This makes it the ideal tool for damage control and restoration companies, insurance companies, construction businesses, pest management companies and many more. The use of SIMPLIFY technology allows remote controls strongly reducing the CO₂ impact compared to travels.

WHAT DOES SIMPLIFY CONSIST OF



Simplify App

The Simplify App is used to program the Simplify solution on-site within only two minutes. Available for iOS and Android.



Simplify Dashboard

The dashboard presents all of the Simplify data collected from the job site to the user. Data is presented in both a chart and tabular format showing temperature, relative humidity, vapor pressure, dewpoint and water content from the Simplify Sensor Probe's.



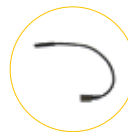
Simplify Control Unit

The Simplify Control Unit is the basic part of the Simplify solution connecting to GSM whenever available and communicating and controlling the network of sensors and equipment on-site programmed to it. It transmits data e.g. power consumption and alarms from sensors to the Simplify Dashboard in real-time.



Simplify Sensor Box

The Simplify Sensor Box, powered by a regular 9V lithium battery, is used to transmit data from the connected Simplify Sensor Probe, back to the Simplify Control Unit. It can be controlled from the Simplify Dashboard, adjusting the data frequency to desired levels.



Simplify Sensor Probe

The Simplify Sensor Probe is a humidity and temperature sensor with a unique precision of +/- 2.0 % in the range from 0-100% RH and +/- 0.2°C deviation on the temperature measurements. The Simplify Sensor Probe comes with different lengths of cable – 24cm, 300cm, and 2000cm.



Simplify Relay Box

The Simplify Relay Box with three independently switchable 230V AC outlets and on-board MID approved kWh meter measures the total power consumption (kW and kWh) of all connected devices. The 230V AC outlets can be individually on/off controlled from the Simplify Dashboard thereby turning equipment on or off remotely.



Simplify CC4 Box

The Simplify CC 4 Box has four independently switchable 230V outlets and on-board MID approved kWh meter measures the total power consumption (kW and kWh) of all connected devices. It can be locked to fulfill MID requirements. The 230V AC outlets can be individually on/off controlled from the Simplify Dashboard thereby turning equipment on or off remotely.

SIMPLIFY BENEFITS

- **Reduce** your **costs of claims**: Fewer on-site visits because you can monitor everything remotely
- **Capture**, share and utilise climate process **data** such as temperature, humidity and equipment status
- Use data to create reports that **document** the **efficiency** of your climate control jobs
- **Minimise** equipment **downtime**: Instant notification if a unit is switched off by mistake or if it malfunctions
- **Carry out** climate control jobs **faster**: Less downtime and realtime control of data eliminates idle and/or wasted time
- **Reduce** your **carbon** footprint: Faster project circles reduce **power** consumption. Fewer on-site visits reduce vehicle maintenance and **fuel** costs
- Handle **more claims**: Faster project circles enable you to handle more claims with the same pool of equipment
- **Detect** on-site **issues** instantly

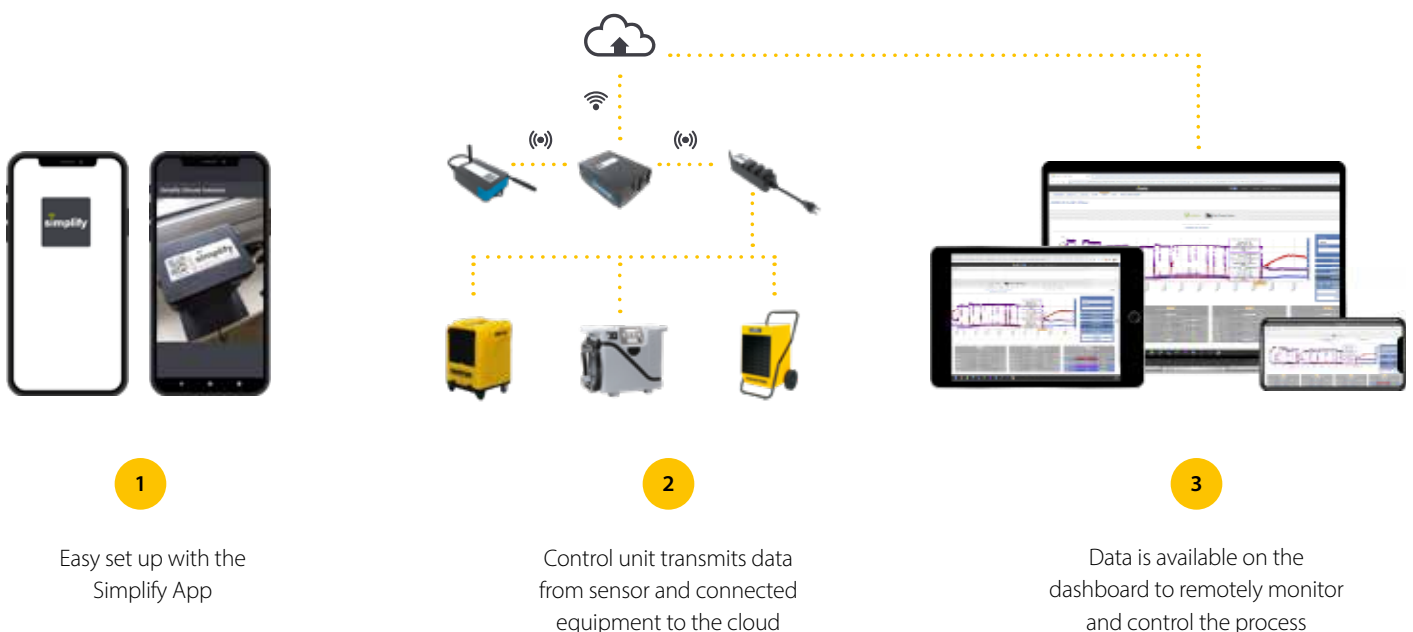
HOW IT WORKS

In simple terms, Simplify remote monitoring uses wireless sensors on buildings and equipment that monitor the drying, heating or cooling process throughout your climate project, for instance in the construction or water damage restoration industry.

That way, Simplify lets you check the dehumidifying, heating or cooling status in real-time from almost any device anywhere. In addition, you can remotely monitor and control parameters such as power on/off, alarms, temperature and power consumption. In other words, remote monitoring in a climate process removes and reduces costs associated with the management of a claim or project and your assets.

Easy installation with the Simplify app

The Simplify App is your tool for installation and archiving of each claim, providing a fast, efficient, and simple to use method of installing the equipment on-site – within only two minutes.



Dantherm A/S

Marienlystvej 65
DK-7800 Skive
Denmark
t. +45 96 14 37 00

Dantherm Ltd.

Unit 12, Galliford Road
Maldon CM9 4XD
United Kingdom
t. +44 (0)1621 856611

Dantherm GmbH

Oststraße 148
22844 Norderstedt
Germany
t. +49 40 526 8790

Dantherm S.p.A.

Via Gardesana 11
37010 Pastrengo (VR)
Italy
t. +39 045 6770533

Dantherm Sp. z o.o.

ul. Magazynowa 5a
62-023 Gądki
Poland
t. +48 61 65 44 000

Dantherm SP S.A.

C/Calabozos 6
(Polígono Industrial)
28108 Alcobendas, Madrid
Spain
t. +34 91 661 45 00

Dantherm SAS

23 rue Eugène Hénaff
69694 Vénissieux Cedex
France
t. +33 4 78 47 11 11

Dantherm AS

Løkkeåsveien 26
3138 Skallestad
Norway
t. +47 33 35 16 00

Dantherm AB

Fridhemsvägen 3
602 13 Norrköping
Sweden
t. +46 (0)11 19 30 40

Dantherm LLC

Transportnaya 22/2
142800, Stupino
Moscow
Russia
t. +7 (495) 642 444 8

MCS China

Unit 2B, No. 512
Yunchuan Road
Baoshang, Shanghai, 201906
China
t. +8621 61486668

AirCenter AG

Täferstrasse 14
CH-5405 Baden Dättwil
Switzerland
t. +41 43 500 00 50

Heylo GmbH

Im Finigen 9
28832 Achim
Germany
t. +49 4202 97550

SET Energietechnik GmbH

August-Blessing-Straße 5
71282 Hemmingen
Germany
t. +49 7150 94540

Dealer:

KEEP UPDATED
FOLLOW US ON:



danthermgroup.com